

#TEAMCOUNTERACT

Be part of the Counteract Revolution

Enter our monthly giveaway for a chance to win fantastic prizes! Simply follow us on social media and tag us using **#teamcounteract** in a post featuring your vehicle or a video review. Each month, we'll select a lucky winner to receive either a **\$100 Amazon Gift Card** or a **FREE DIY Kit** of their choice.

Visit
teamcounteract.com
for more details!

SCAN THE QR CODE BELOW
TO CONNECT WITH US ONLINE!



Download the Counteract Application App to determine the proper amount of Counteract Balancing Beads needed in any tire.

AVAILABLE FOR ANDROID AND APPLE DEVICES.



GET IT ON
Google Play



Download on the
App Store

DIY KIT INSTRUCTIONS

Scan for more
installation details



Balancing the wheels of transportation



www.counteractbalancing.com

1-800-572-8952 • 519-837-3331

contact@counteractbalancing.com

THROW IN METHOD

Counteract applications of 4oz and up can conveniently be thrown inside the tire during the mounting process. Simply open the branded Counteract bag and remove the clear bag containing the beads and place it in the tire cavity.

Once the wheel begins to roll, the bag will break on its own and allow the beads to disperse inside the tire. For applications 3oz and under we recommend pouring the beads into the tire, installing through the valve stem if there is no TPMS or tear the bag before placing it inside the tire.



It is highly recommended by Counteract to use an appropriate tire mounting compound. The preferred choice is a paste formula, specifically identified by Part# CBB-EP8. →

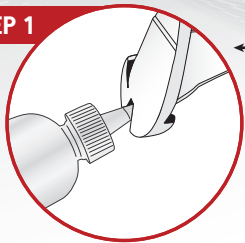


Disclaimer: Counteract disclaims any responsibility if the tire is improperly mounted, damaged, or if any sort of soap/water formula or non-approved tire mounting formula is used for mounting the tire.

INJECTION BOTTLE METHOD

Please follow instructions carefully. Please contact us with any questions.

STEP 1



← Cut the Counteract bottle spout above the mark.

STEP 2



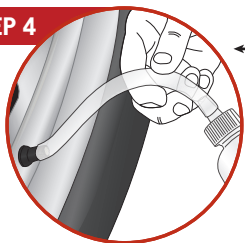
← Remove the bottle cap and carefully pour the beads into the bottle. Attach the clear tube to the bottle cap spout.

STEP 3



← Rotate the wheel so the valve stem is at the bottom, deflate the tire by removing the valve core and then place one end of the clear tube over the valve stem.

STEP 4



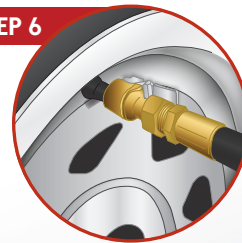
← Invert the Counteract bottle and squeeze repeatedly to get all the Counteract Balancing Beads to flow down the clear tube into your tire.

STEP 5



← Use the airline to clear the valve stem and then screw the Counteract valve core into the valve stem.

STEP 6



← Re-inflate the tire to the manufacturers' recommended pressure.

STEP 7



← Screw the supplied valve cap on.

Valve core and valve cap included inside the Counteract bag.



Always wear safety goggles.



Disclaimer: Counteract disclaims any responsibility for air loss or tire damage due to improper installation.